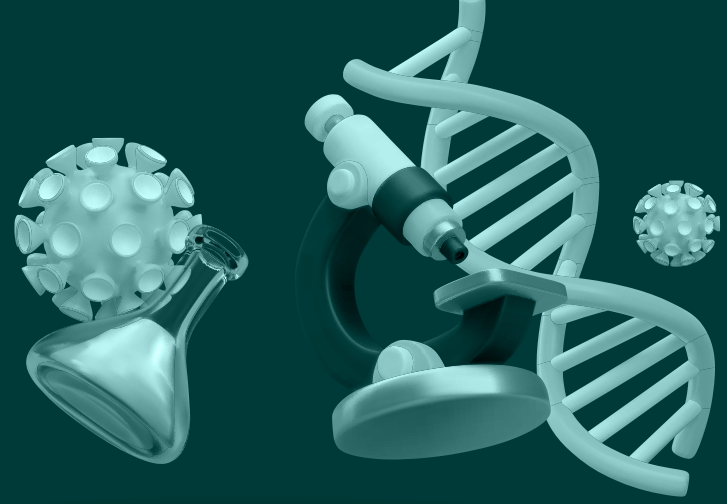




Co-created
in Lithuania



Life sciences in Lithuania

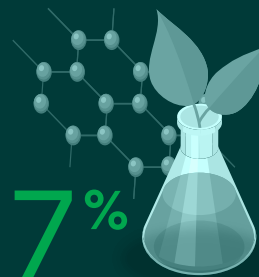
Growing, innovative and cooperative

The Lithuanian Life Sciences Sector shows strong traditions, consistent investments in infrastructure, has a rapidly growing number of startups that are noticed internationally. This sector has a pool of talented and highly-qualified specialists.



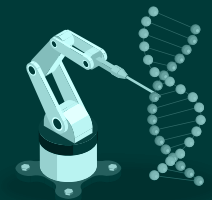
86%

of all Lithuanian life sciences production is exported to more than 100 countries



17%

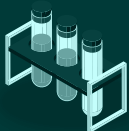
growth of no. of companies in the last 5 years



2.2%

of GDP created by the sector

Infrastructure



Vilnius University

student teams have won **9 gold medals, 1 bronze and 2 grand prizes** at the prestigious synthetic biology iGEM Competition since 2015



7 7

universities and colleges to study life sciences



26

open R&D centers and 8 of them are for life sciences



5

science and business valleys



Professor **Virginijus Šikšnys** is one of the most important pioneers in CRISPR-Cas9 technology. Professor received the Warren Alpert Foundation Prize in 2016, Novozymes Prize in biotechnology in 2017 and Kavli Prize in nanoscience in 2018.



Vilnius

Thermo Fisher Baltics is recognized as a Center of Excellence for Biosciences manufacturing, R&D and has the biggest R&D laboratory in the Baltic States. This R&D center in Vilnius is already the company's largest operation outside of its headquarters in the US.

Top export destinations:



Life sciences ecosystem

Biotech & pharma

CELL & GENE



PROTEINS



PHARMA



CDMO



MICROFLUIDS



SERVICES



PRE-CLINICAL AND CLINICAL RESEARCH SERVICES



Medical technologies

MEDICAL DEVICES



ELECTRONICS



DISPOSABLES



AI / ML



Green biotech

MICROBIOLOGICAL PRODUCTS



Co-created
in Lithuania

Innovation Agency Lithuania is the official public agency responsible for the development of Lithuanian innovation ecosystem and the promotion of innovation at all stages of business development.

info@innovationagency.lt
inovacijauagentura.lt
b2lithuania.com